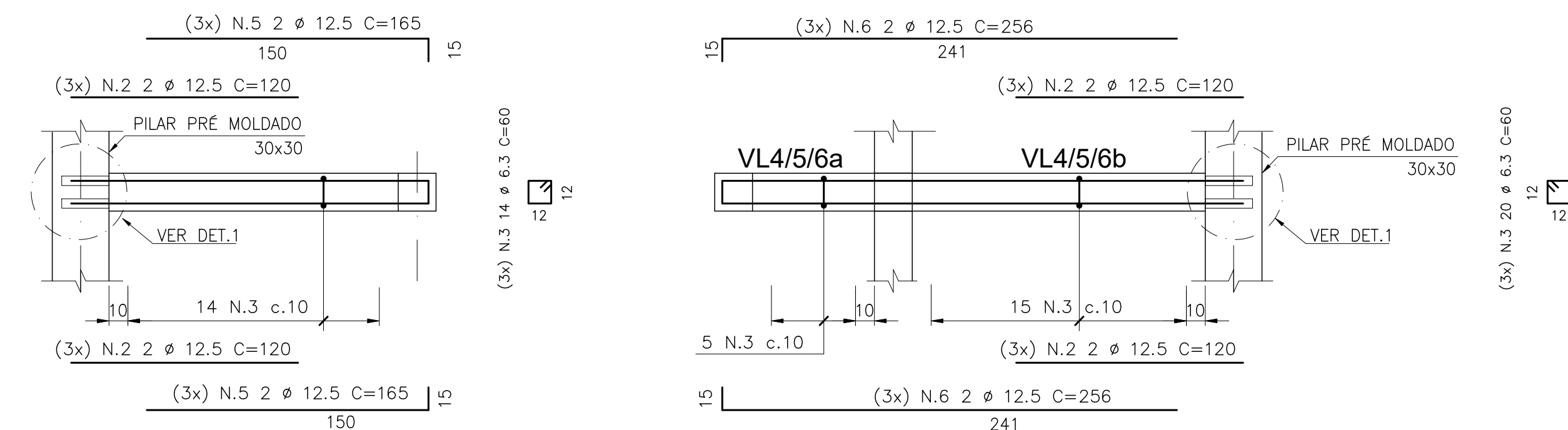
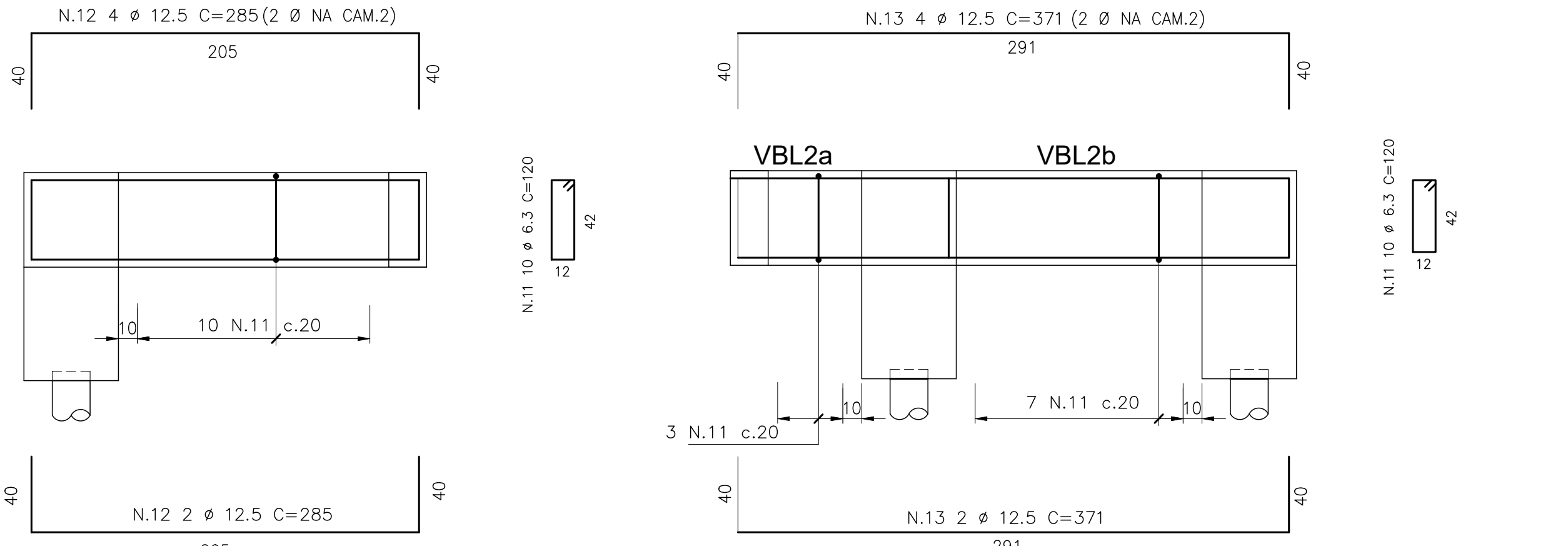


LIGAÇÃO BP1- BP2



VIGAS VL1-VL2-VL3- 20/20 (3x)  
ESC.: 1:25

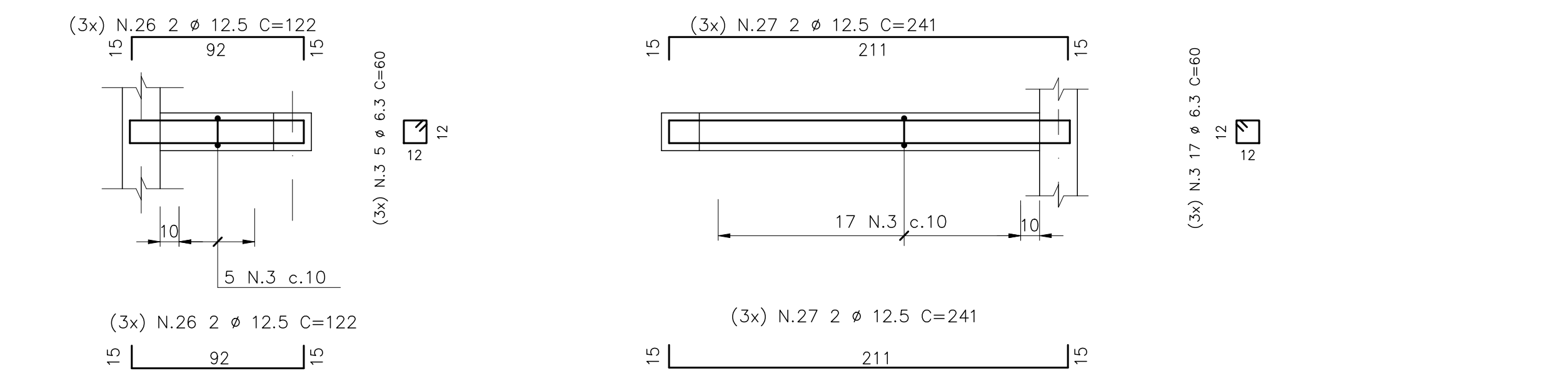
VIGAS VL4-VL5-VL6- 20/20 (3x)  
ESC.: 1:25



VBL1 - 20/50  
ESC.: 1:25

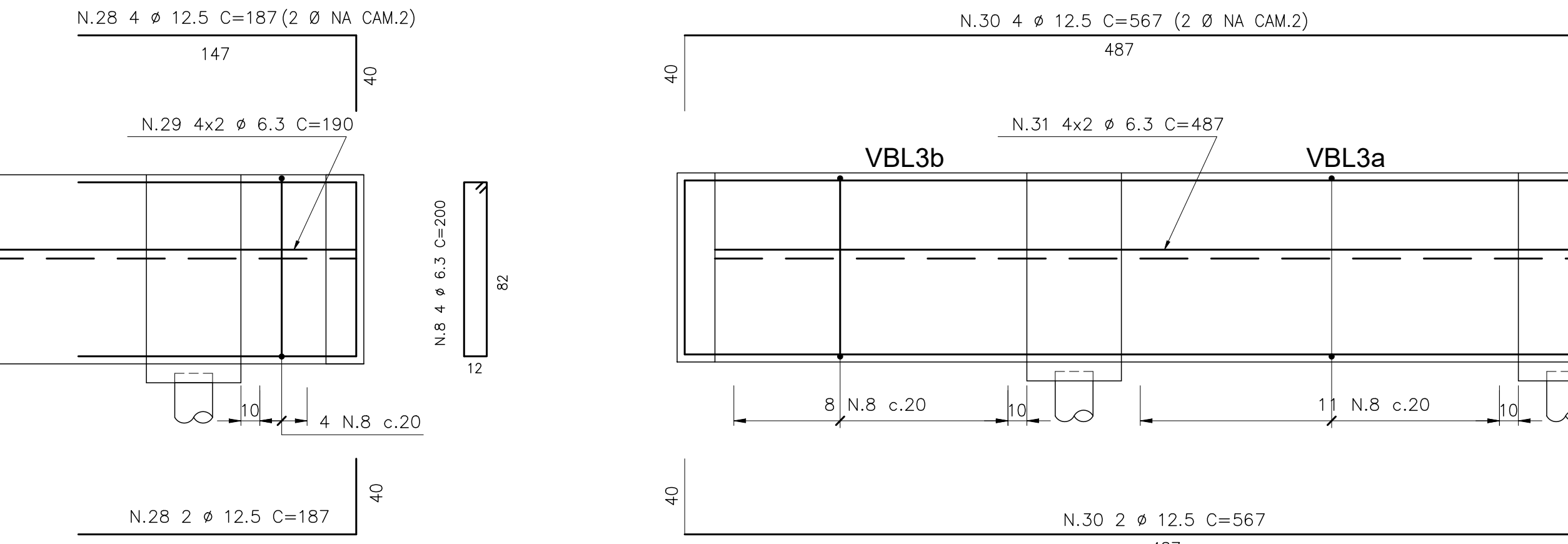
VBL2 - 20/50  
ESC.: 1:25

TRECHO BP5



VIGAS VL13b-VL14b-VL15b- 20/20 (3x)  
ESC.: 1:25

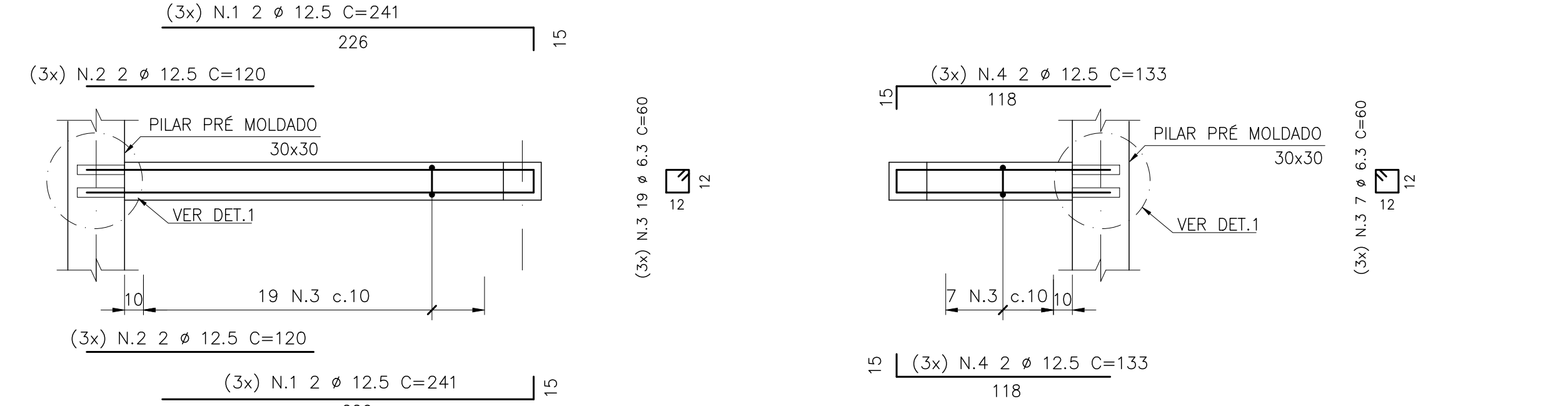
VIGAS VL13a-VL14a-VL15a- 20/20 (3x)  
ESC.: 1:25



VBL4 - 20/90  
ESC.: 1:25

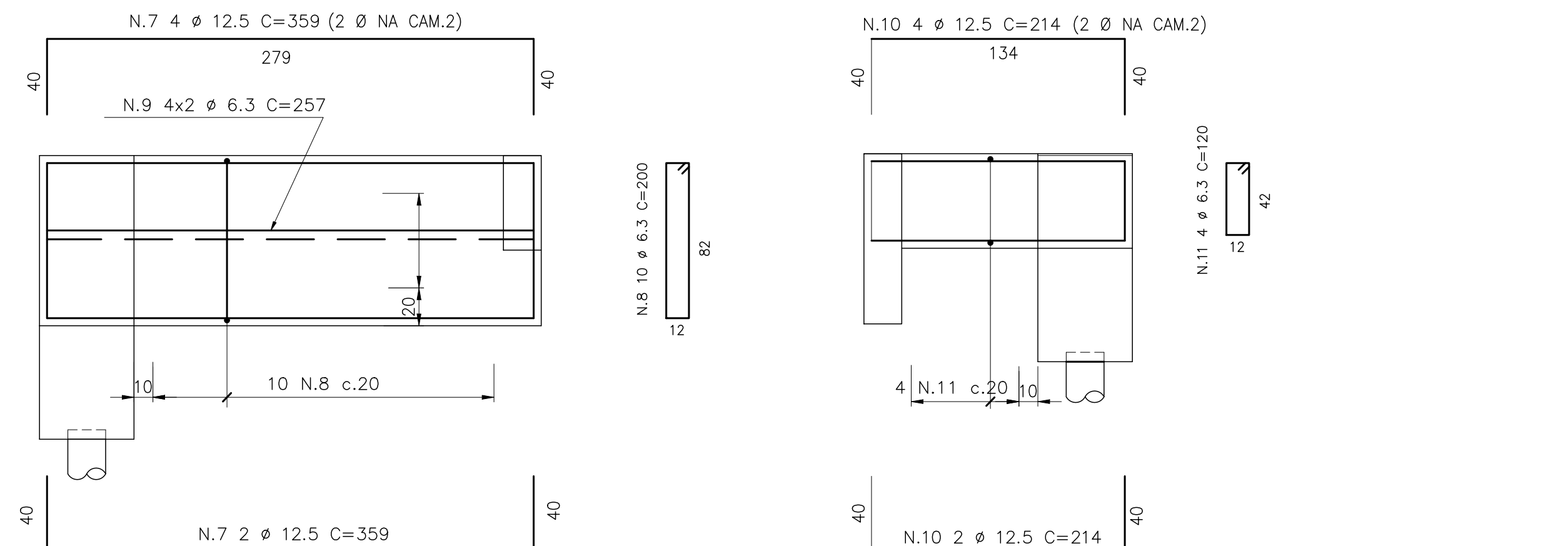
VBL3 - 20/90  
ESC.: 1:25

LIGAÇÃO BP6A- BP1



VIGAS VL16-VL17-VL18- 20/20 (3x)  
ESC.: 1:25

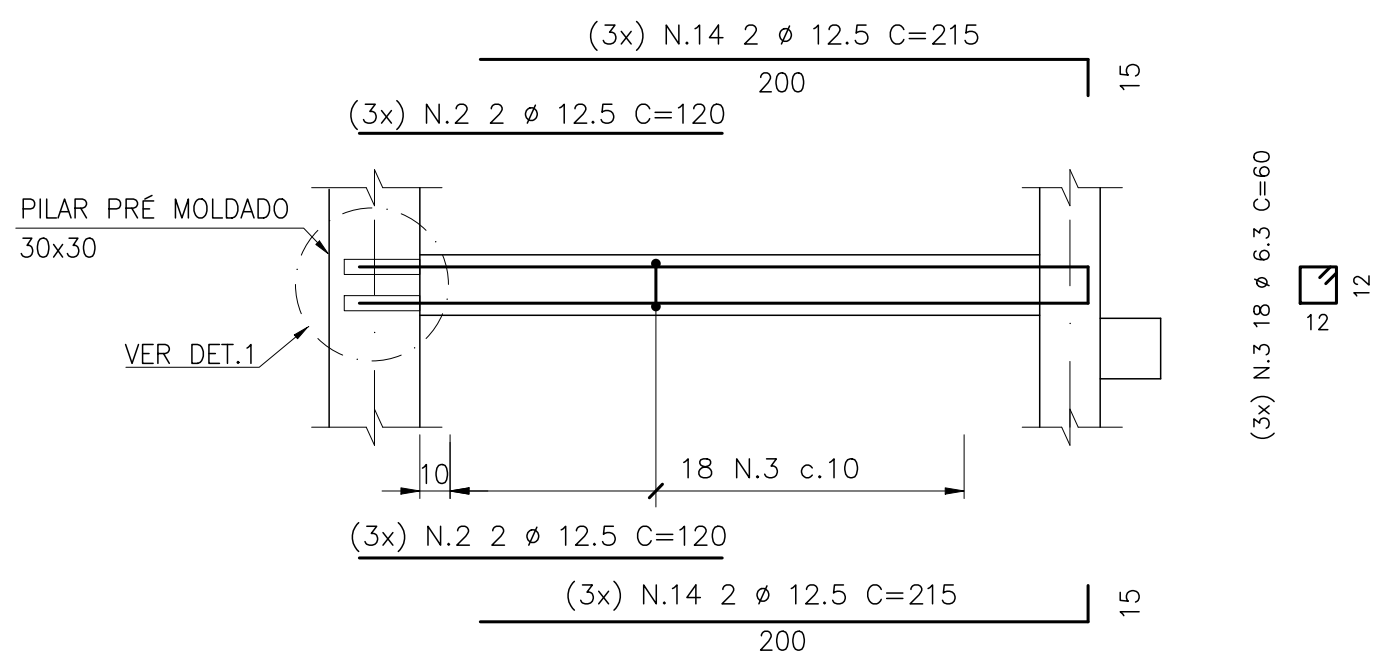
VIGAS VL19-VL20-VL21- 20/20 (3x)  
ESC.: 1:25



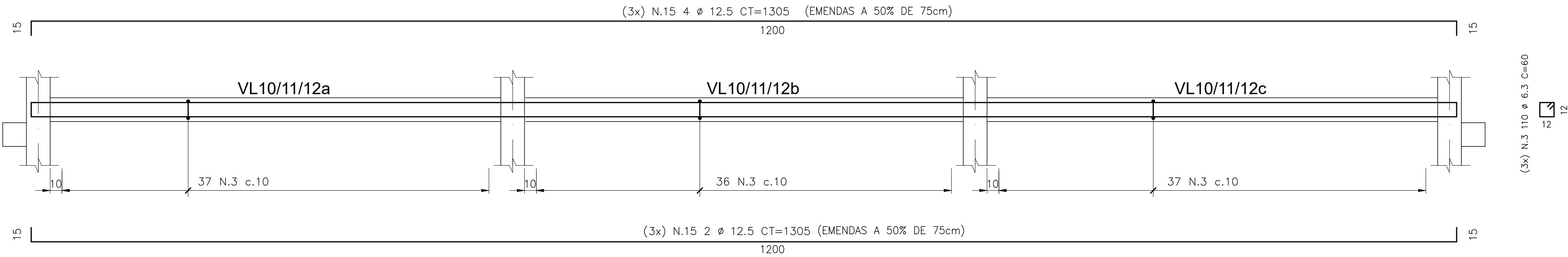
VBL5 - 20/90  
ESC.: 1:25

VBL6 - 20/50  
ESC.: 1:25

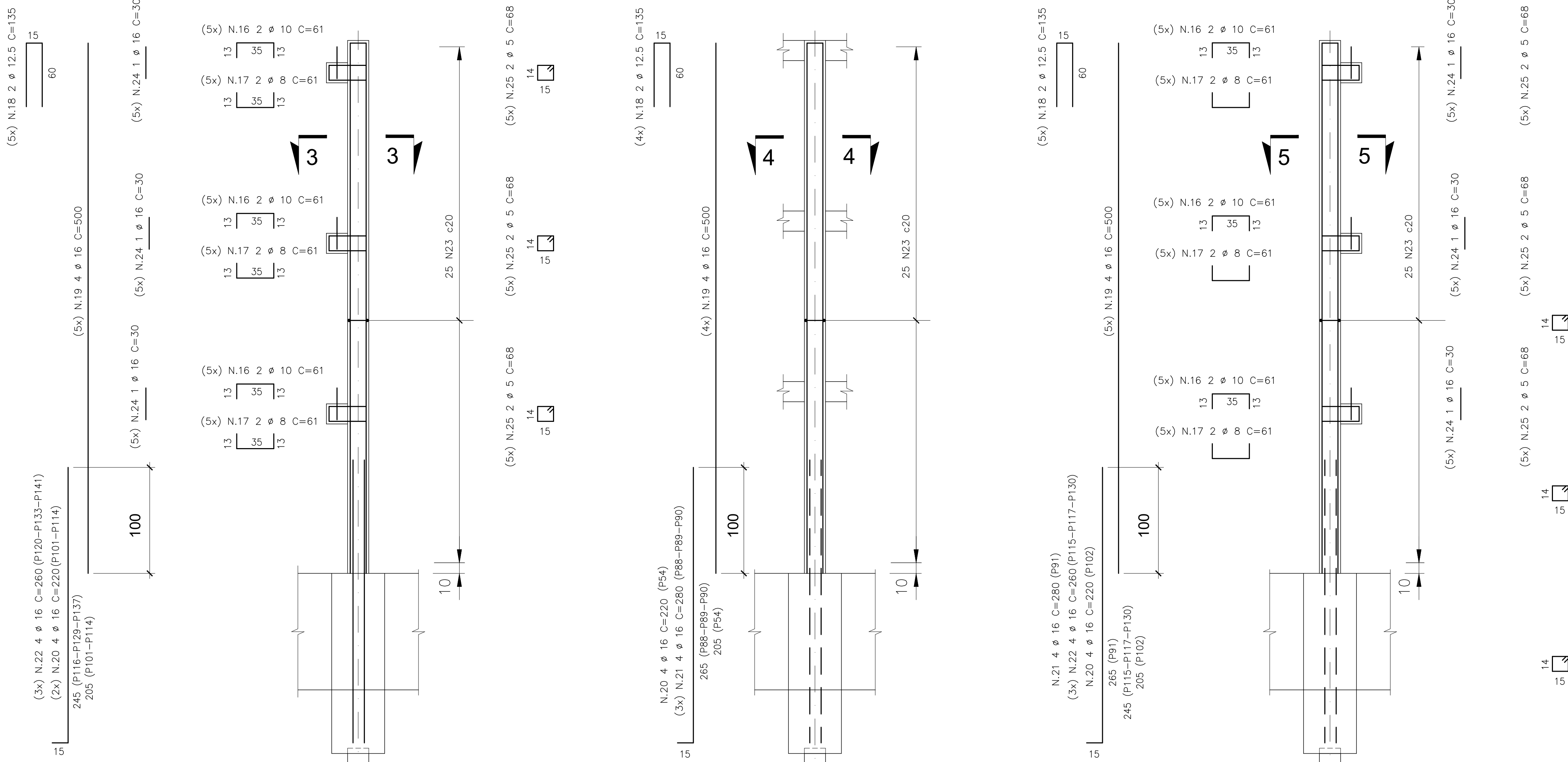
TRECHO BP2



VIGAS VL7-VL8-VL9- 20/20 (3x)  
ESC.: 1:25



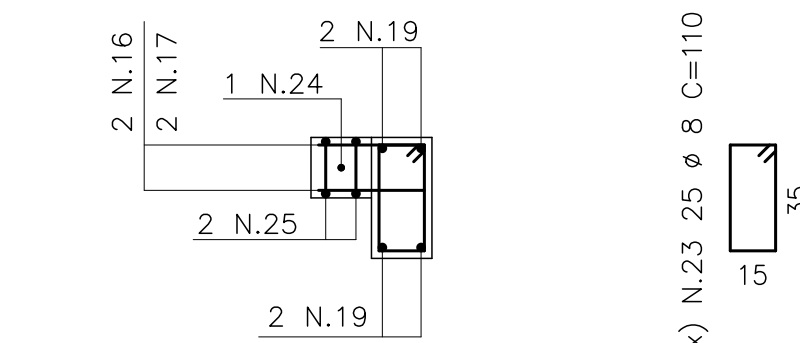
VIGAS VL10-VL11-VL12- 20/20 (3x)  
ESC.: 1:25



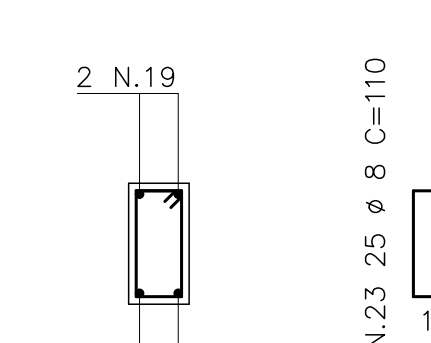
P101-P114-P116-P129-P137 (5x)  
ESC.: 1:25

P54-P88-P89-P90 (4x)  
ESC.: 1:25

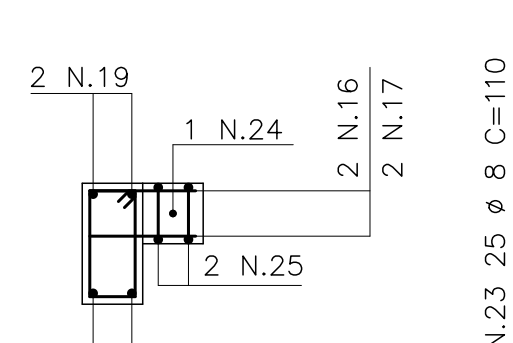
P91-P102-P115-P117-P130 (5x)  
ESC.: 1:25



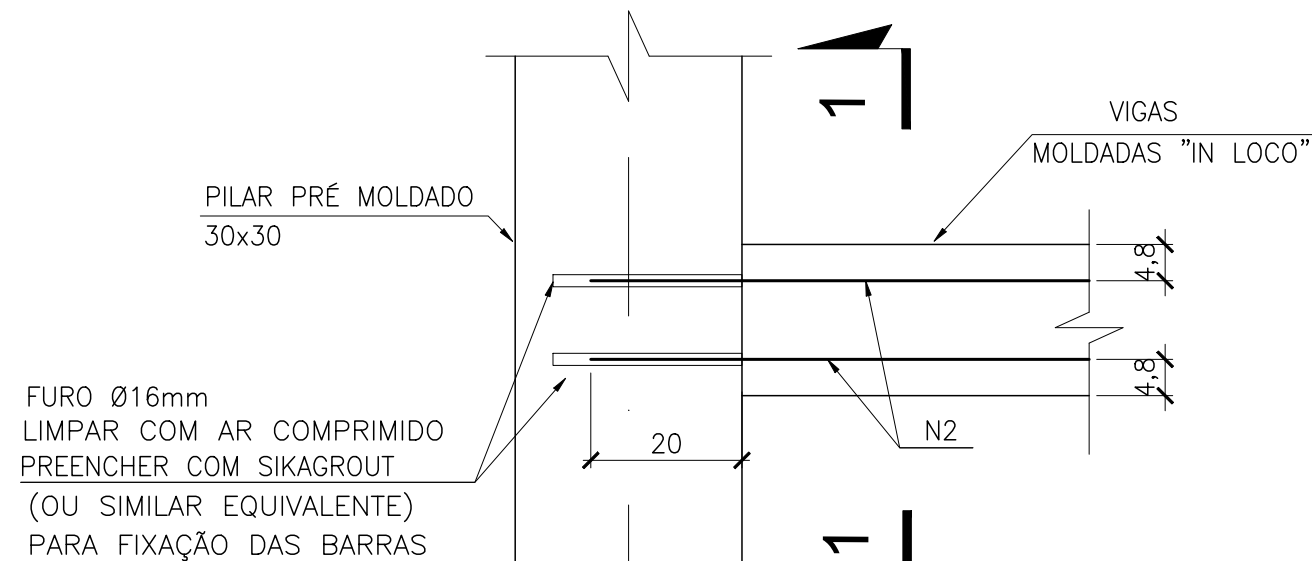
CORTE 3-3  
ESC.: 1:25



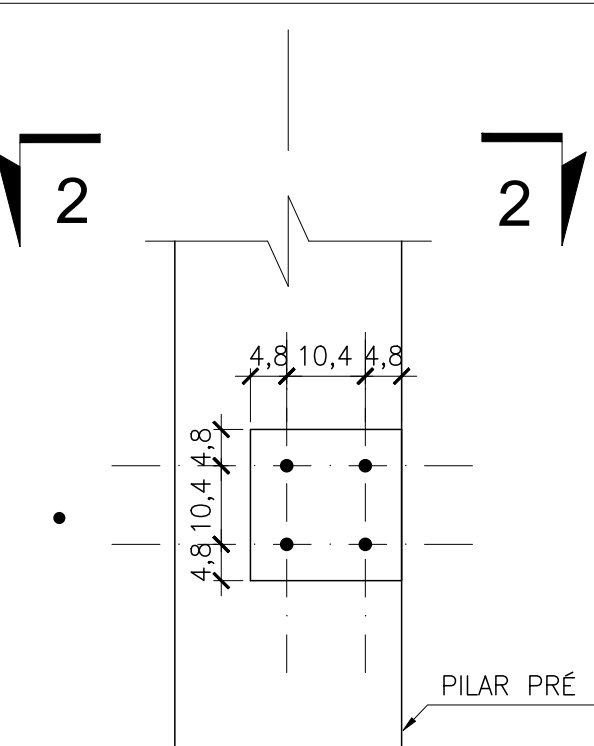
CORTE 4-4  
ESC.: 1:25



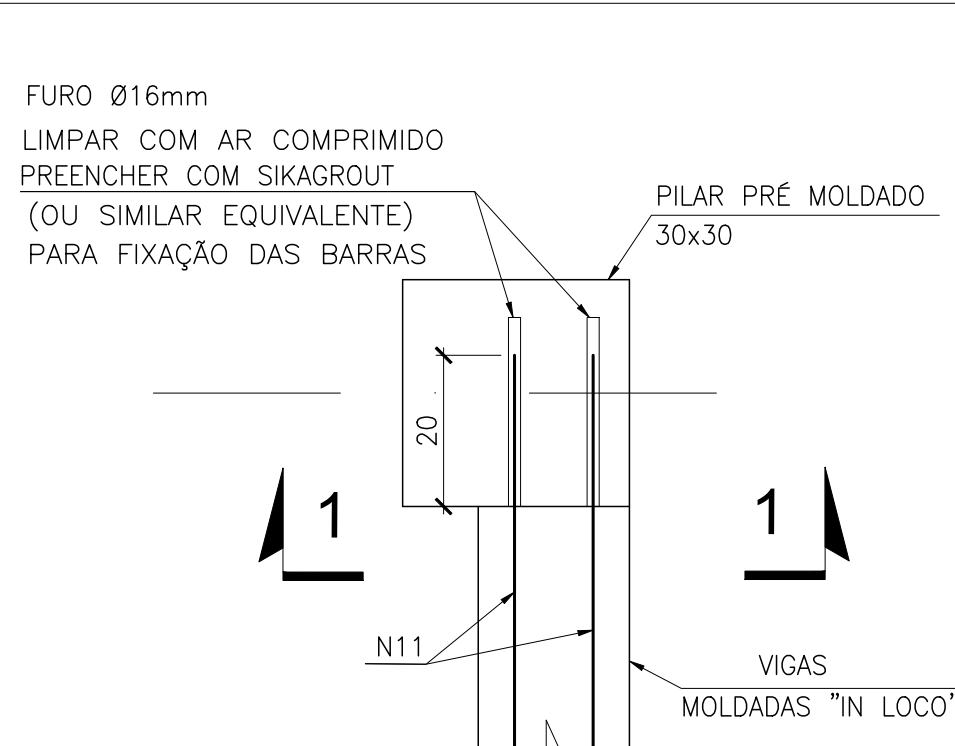
CORTE 5-5  
ESC.: 1:25



DETALHE-1  
ESC.: 1:10



CORTE 1-1  
ESC.: 1:10



CORTE 2-2  
ESC.: 1:10

LISTA DE FERROS				
N	#	QUANT	COMPRIMENTOS (cm)	
			UNITÁRIOS	TOTAL
1	12,5	12	241	2892
2	12,5	36	120	4320
3	6,3	576	60	34560
4	12,5	12	133	1596
5	12,5	12	165	1980
6	12,5	12	256	3072
7	12,5	6	359	2154
8	6,3	33	200	6600
9	6,3	8	257	2056
10	12,5	6	214	1284
11	6,3	24	120	2880
12	12,5	6	285	1710
13	12,5	6	371	2226
14	12,5	4	0	0
15	12,5	18	CORROÍ	23490
16	10	72	61	4392
17	8	72	61	4392
18	12,5	30	135	4050
19	16	60	500	30000
20	16	20	220	4400
21	16	16	280	4480
22	16	24	260	6240
23	8	375	110	41250
24	16	36	30	1080
25	5	72	68	4968
26	12,5	12	122	1464
27	12,5	12	241	2892
28	12,5	6	187	1122
29	6,3	8	190	1520
30	12,5	6	567	3402
31	6,3	8	487	3896

RESUMO AÇO CA 50			
#	kg/m	COMPR. (m)	PESO (kg)
5,0	0,154	48,96	8
6,3	0,245	515,12	126
8	0,395	495,42	180
10	0,617	43,92	27
12,5	0,963	576,54	555
16	1,578	462	729
PESO TOTAL			1626

NOTAS GERAIS

- DIMENSÕES EM CENTÍMETRO, BITOLAS EM MILÍMETROS, EXCETO ONDE INDICADO.
- CONCRETO : fck ≥ 30MPa.
- FATOR AÇAMENTO = 0,55.
- CLASSE DE AGRESSIVIDADE III (FORTE).
- AÇO CA-50
- COBRIMENTO DAS ARMADURAS:  
VIGAS = 4,0cm  
PILARES = 2,5cm
- CORTAR E DOBRAR AS BARRAS CONFORME NBR-6118.

B	TRECHOS BP1, BP2 E BP6a FORAM SUBSTITUÍDOS POR PRÉ MOLDADO DE CONCRETO	ROGÉRIO GUIMARÃES	DEZ/2023
A	LANÇAMENTO DE PROJETO EXECUTIVO	ROGÉRIO GUIMARÃES	SET/2023

B	ALTERAÇÃO TRECHOS BP1, BP2 E BP6a	J. E. V. ZÚNIGA	J. E. V. ZÚNIGA	2012/2023
EMIS	DESCRIÇÃO	REVISADO POR	RESP. TÉCNICO	DATA
Ministério da Saúde	Ministério da Saúde			
FIOCRUZ	FIOCRUZ			
ESTRUTURA/ARMADURAS	ESTRUTURA/ARMADURAS			
PROJETO EXECUTIVO	PROJETO EXECUTIVO			
ARMADURAS	ARMADURAS			
PARTES 3/4	PARTES 3/4			
RESPONSÁVEL TÉCNICO:	RESPONSÁVEL TÉCNICO:			
JOSÉ EDUARDO V. ZÚNIGA	JOSÉ EDUARDO V. ZÚNIGA			
84105210-8D	84105210-8D			
EQUIPE	EQUIPE			
J. E. V. ZUNIGA, MARCELA G., MONICA NUNES, RAFAEL LOQUES, ROGÉRIO GUIMARÃES	J. E. V. ZUNIGA, MARCELA G., MONICA NUNES, RAFAEL LOQUES, ROGÉRIO GUIMARÃES			