

TABELA DE FERROS - CONTEÚDO 5					
		COMPRIMENTO		PESO	
N	BIT. (mm)	QUANT.	UNIT (cm)	TOTAL (cm)	UNIT (kg) TOTAL (kg)
1	8	24	170	4080	0,67 16
2	8	24	206	4944	0,81 20
3	6,3	48	12	576	0,03 1
4	6,3	18	473	8514	1,16 21
RESUMO DE AÇO					
BIT. (mm)	COMP. (m) OU (m²)		PESO (kg)		
6,3	91		22		
8	90		36		
TOTAL			58		
CONCRETO Fck = 30MPa			1,06		

2 CORTE A-A - FORMA

4 ARMAÇÃO DA CONTENÇÃO 5

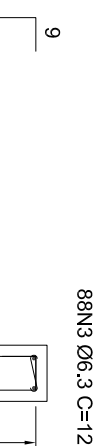
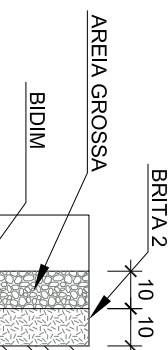
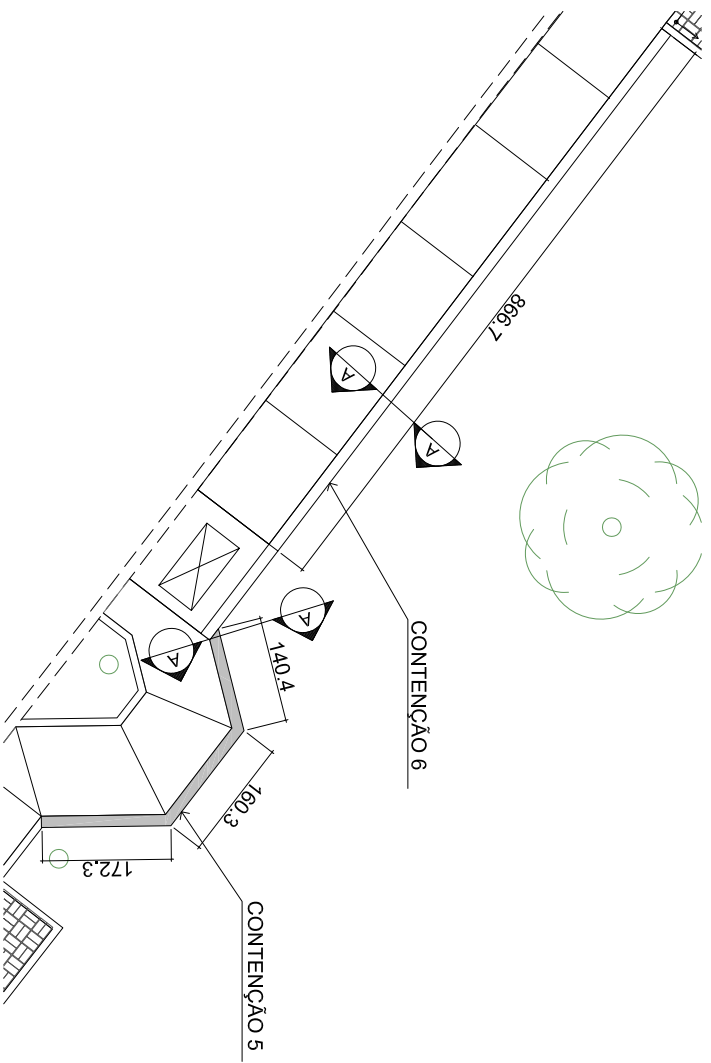
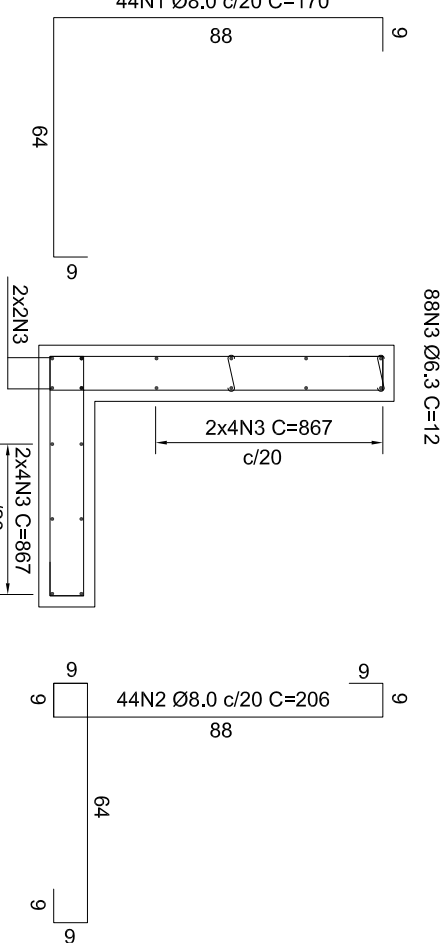
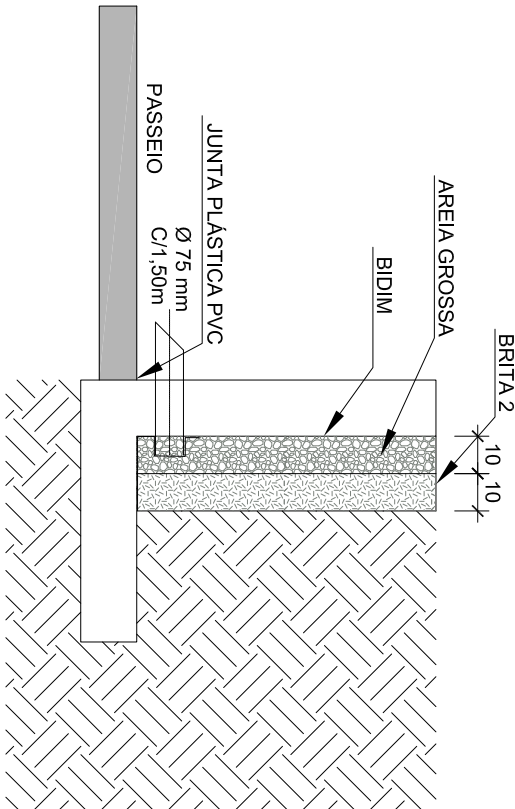


TABELA DE FERROS - CONTENÇÃO 6					
			PESO		
		COMPRIMENTO			
N	BIT. (mm)	QUANT.	UNIT (cm)	TOTAL (cm)	UNIT (kg)
1	8	44	170	7480	30
2	8	44	206	9064	36

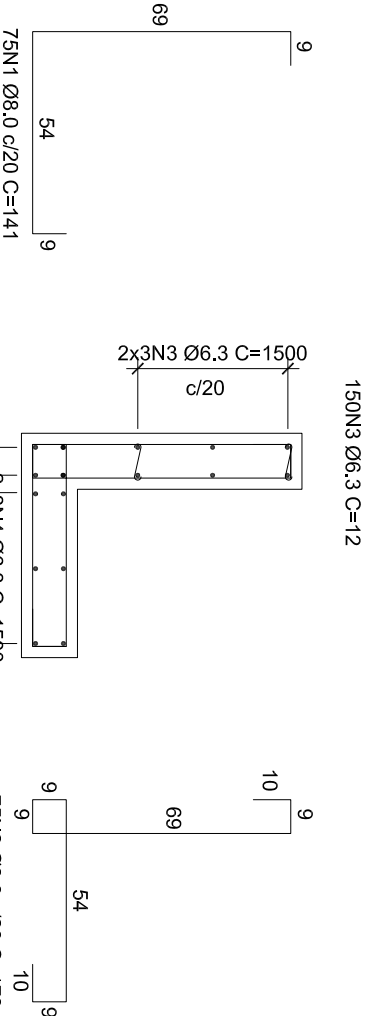
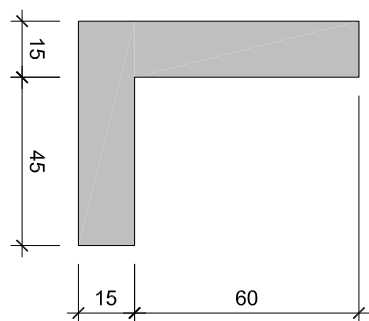
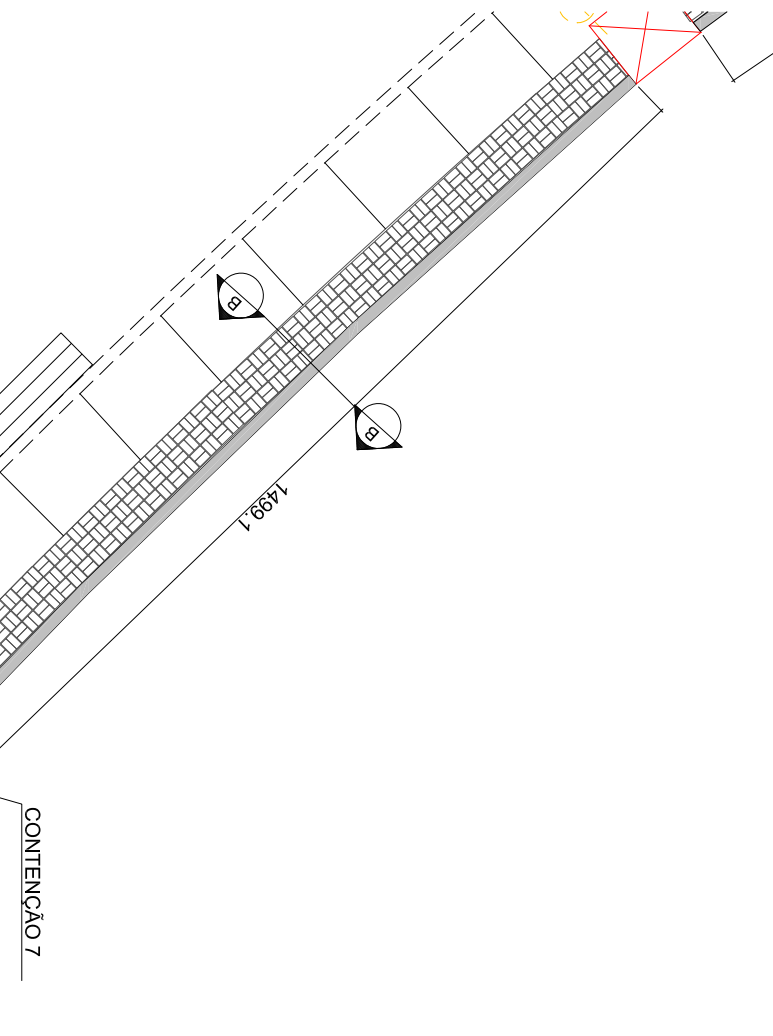
1 PLANTA BAIXA DA CONTENÇÃO DO PASSEIO 5 E 6 - TRECHO D



RESUMO DE AÇO		
BIT. (mm)	COMP. (m) OU (m²)	PESO (kg)
6,3	167	41
8	165	65
TOTAL		

3 DETALHE DO PASSEIO

5 ARMAÇÃO DA CONTENÇÃO 6



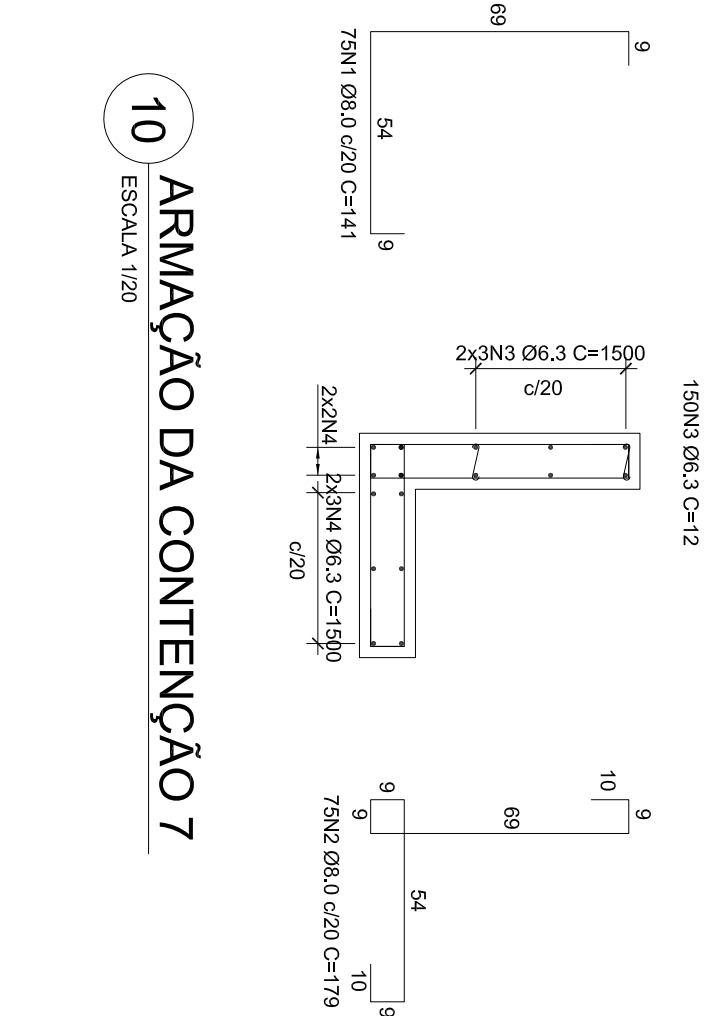
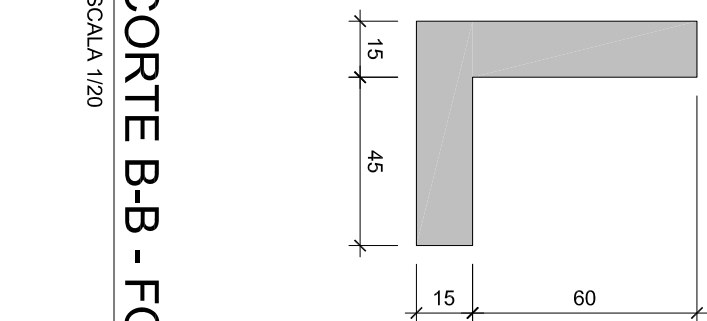
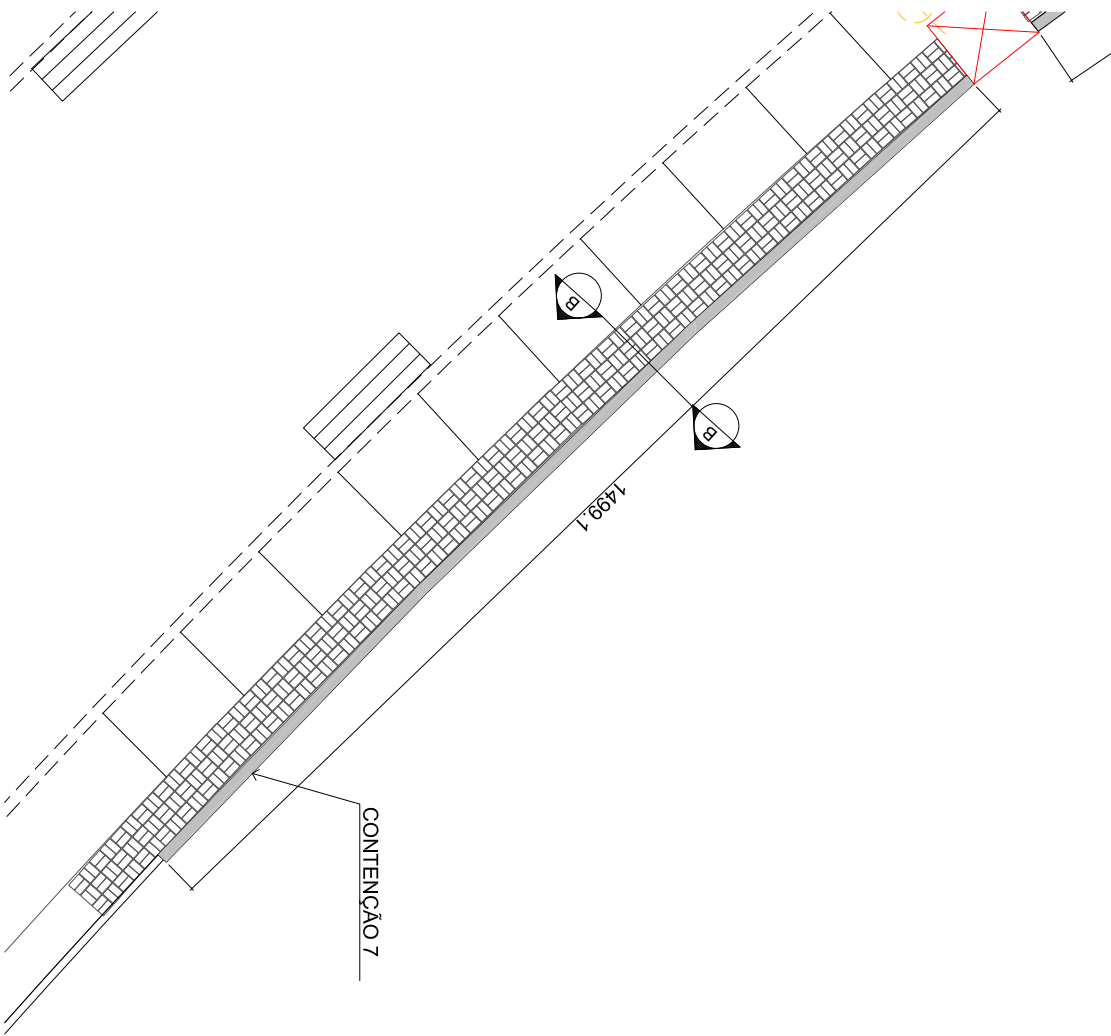
RESUMO DE AÇO		
BIT. (mm)	COMP. (m) OU (m²)	PESO (kg)
6,3	258	63
8	240	95

8 CORTE B-B - FORMA

10 ARMAÇÃO DA CONTENÇÃO 7

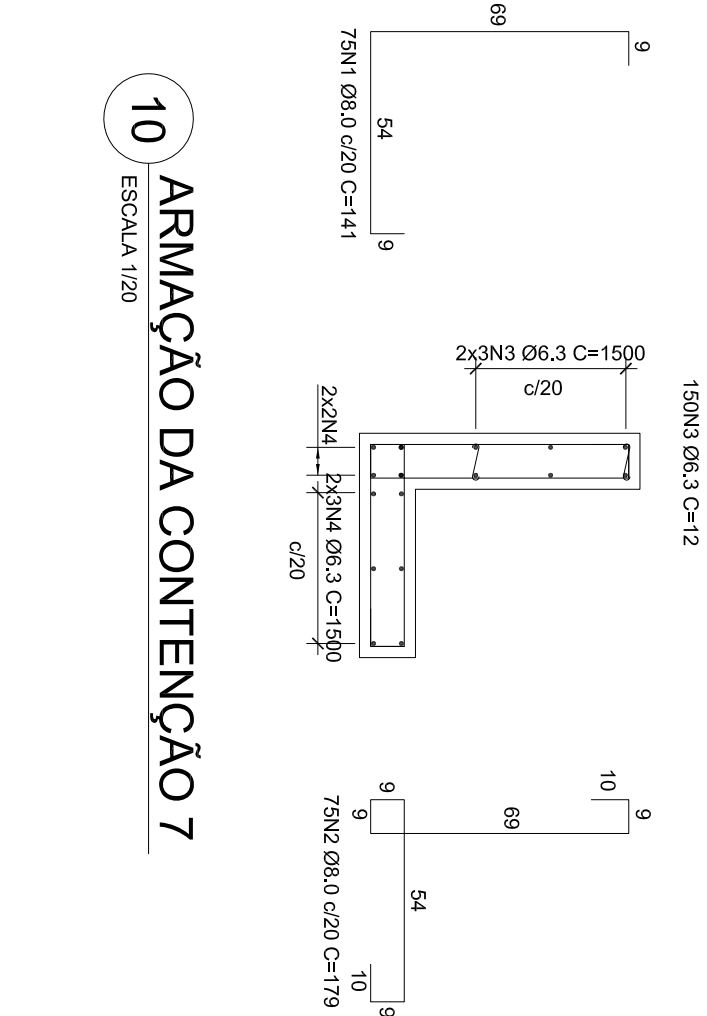
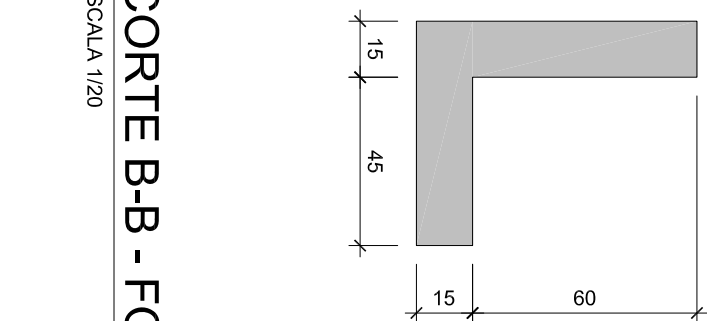
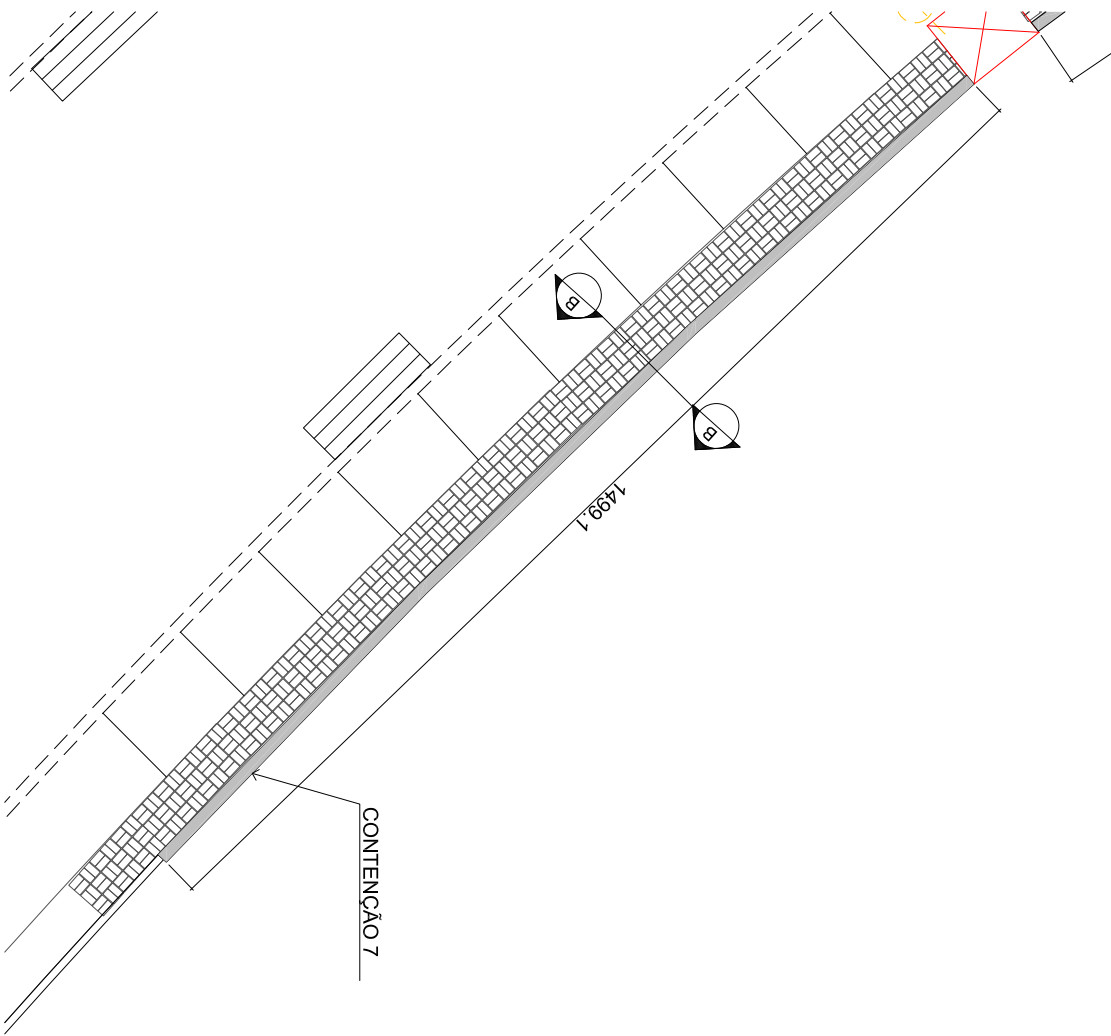
TOTAL	
COMPRIMENTO (m)	498
PESO (kg)	158
MATERIAIS	
FOIRMA (m²)	22,86
CONCRETO Fcd = 30MPa (m³)	2,7

6 PLANTA BAIXA DA CONTENÇÃO DO PASSEIO 7 - TRECHO D

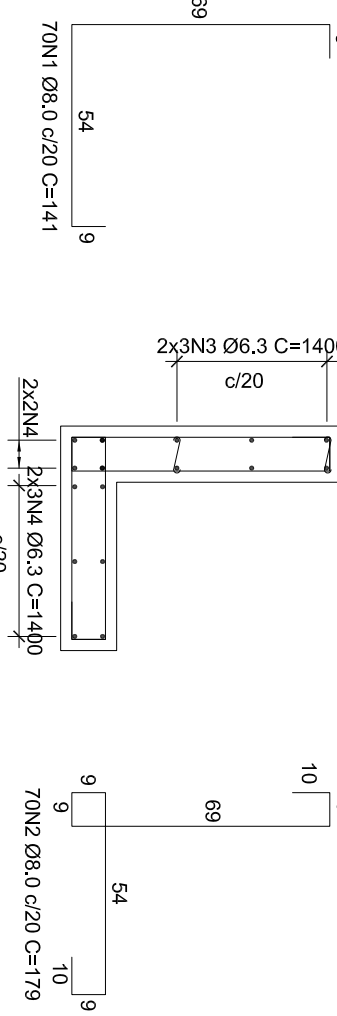
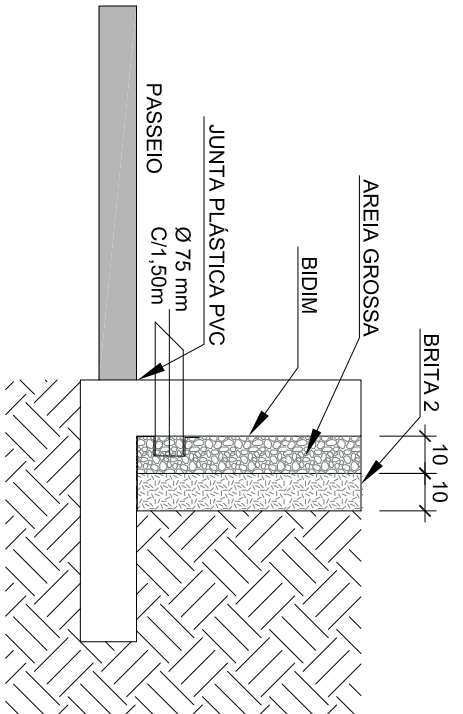


TOTAL	
COMPRIMENTO (m)	498
PESO (kg)	158
MATERIAIS	
FORMA (m²)	22,86
CONCRETO Fck = 30MPa (m³)	2,7

6 PLANTA BAIXA DA CONTENÇÃO DO PASSEIO 7 - TRECHO D



TOTAL	
COMPRIMENTO (m)	498
PESO (kg)	158
MATERIAIS	
FORMA (m²)	22,86
CONCRETO Fck = 30MPa (m³)	2,7



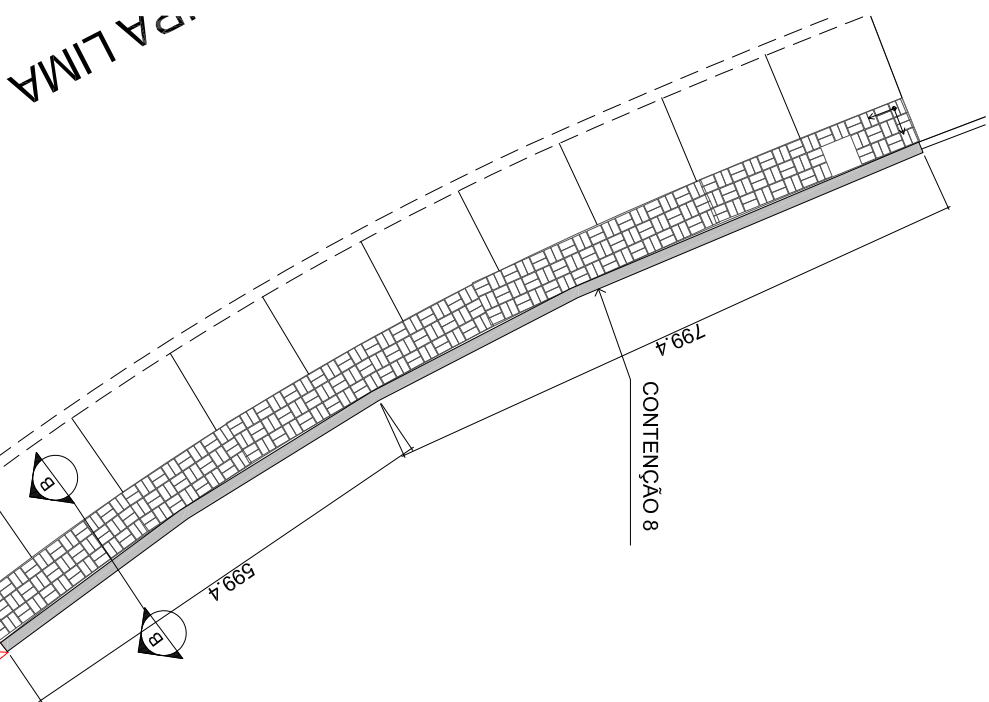
	RESUMO DE AÇO	
BIT. (mm)	COMP. (m) OU (m²)	PESO (kg)
6,3	241	59
8	224	88
TOTAL		
COMPRIMENTO (m)		465

9 DETALHE DO PASSEIO

11 ARMAÇÃO DA CONTENÇÃO 8

7 A LIMA

7 PLANTA BAIXA DA CONTENÇÃO DO PASSEIO 8 - TRECHO D



9 DETALHE DO PASSEIO